

2018-2019

STUDENT'S GUIDE BOOK

ALL YOU NEED TO KNOW FOR THE FIRST STEP



CAMBRIDGE
International Examinations

Cambridge International School



GÖKKUŞAĞI



KOLEJİ

1997

As the Gökkuşığı family, we want to welcome you warmly. We hope that you will be happy at our school and you can reach your personal goal throughout the semester. In this booklet, we presented some beneficial information about our country and our school to quicken your adaptation process. We wish you a pleasant year...

Gökkuşığı Family

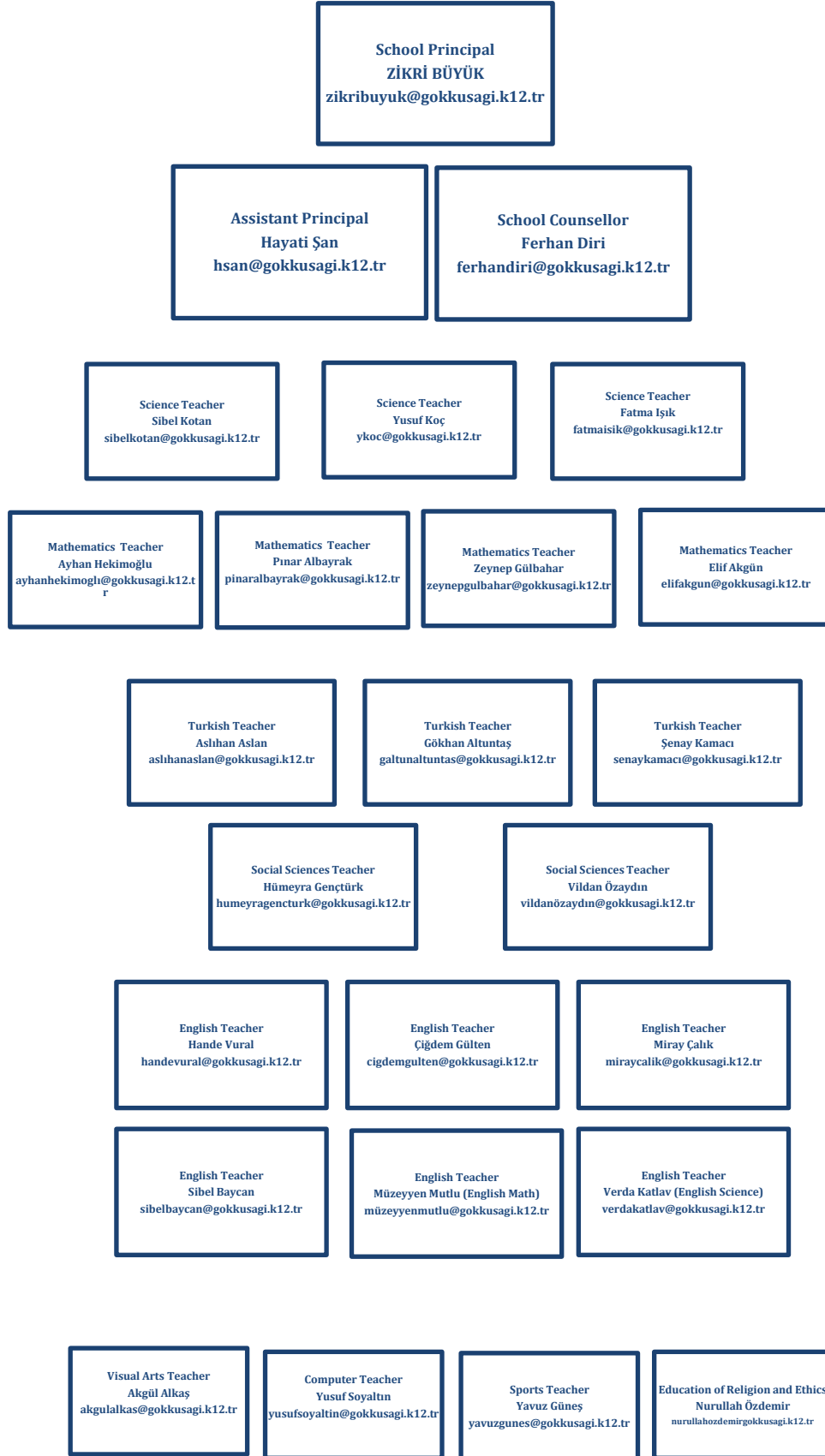
Our Story

21 years ago, in year 1997, Gökkuşığı College was founded. Throughout these years, we have been developing and becoming a school which has an international perspective. Our story that began with Bahçelievler campus which is located in the European side is continues with our other campuses in Ümraniye, Bahçeşehir, and Beylikdüzü neighbourhoods. We can proudly say that we are a Global School because of our IB and PYP programs. Another important facility of our school is our sister company is called Gelişim University. The projects that we constitute together are very outstanding on education field. Our institutions continue to raise students who can keep her/his own values and also can have tolerance for different values, have an education which is the integration of both international and national educational programs, and who can exceed any borders with her/his foreign language level. Come and join us, so you can see our lovely school in a deeper sense.

Who Are We?

First of all, we want to tell that we are very assertive about our success in Nursery, Primary, Middle, and High Schools. Our goals in our school are to raise global children who are searcher, querier, risk taker, balanced, is principled, communicative, and have international consciousness. Because of these reasons our students participate in international and national contests such as “TUBITAK International and National Mathematics Championships”, “National and International Computer WEB Design Project Championships”, and “International English Examination” and have multiple achievements among them. Also, we got the title of “Quality Team of the Year” from Ministry of Turkish education and with the help of this title our name is heard in many international and national platforms. We are running through our vision of becoming a “Global School” with passion and with our educators who are in love with their occupations.

Members of the Gökkuşuđı Family



Our Academic Calendar

On the table below, there are the dates of the beginning, the end of the semester, and holidays throughout the school year.

The First Day of the School	17 September 2018
Republic Day(1/2 day holiday)	29 October 2018
New Year(1 day holiday)	1 January 2019
Mid-term break	18 January-3 February 2019
National Sovereignty and Children's Day(1 day holiday)	23 April 2019
Labor and Solidarity Day(1 day holiday)	1 May 2019
Eid al-Fitr(3 days holiday)	5-6-7 June 2019
The End of The Semester	14 June 2019

Our Educational Programs

FOREIGN LANGUAGE: Because our school focuses on international education programs, foreign language education is very important for us. In our education program, Spanish and English are taught by experts in their fields.

- **IB(International Baccalaureate)-PYP(Preparatory Years Programs):** As Gökkuşığı College we are among 3252 schools in the world and among 44 schools in Turkey which gives IB diploma. Additionally, we are among 10,000 schools in the world which gives Cambridge Education Program.

To show the academical excellency, to help the students to reach their goals, and to prepare our children for future lives, we are working really hard.

CAMBRIDGE ASSESSMENT INTERNATIONAL EDUCATION: Science and Mathematics are taught in English parallel to the Cambridge Education Program. Also, our students have 18 hour of English lessons for the reason of becoming an international student.

STEM(Science, Technology, Engineering, and Mathematics): According to this model, first of all our students are expected to identify a problem, then by using science and mathematics knowledge try to solve it, by using technology and engineering abilities to try to implement the situated solution.

CHAMPIONSHIPS PRACTICES: The championship teams are formed at the beginning of the semester and the teachers help them to receive a medal and certificates which can make the child feel more confident. Especially, Math, Science and Informatics are areas that our school give importance.

ONLINE MOBILE EDUCATION: Our school offers many educational games, digital books, and hundreds of applications which enhance the improvement of students' learning. In this respect, all the students have WiFi access in classrooms and learn to use their Ipad.

Student Life

In our campus the first places which students spend time are the classrooms which are well designed and full of educational materials and every corner of school is designed mindfully. In our school there are STEM and Science laboratories, a 3D reality room, a mini cinema, a sports hall, two swimming pools, two libraries, a mind games room, a conference hall, and art, music, computer rooms that are full of materials. There is one school canteen and one dining hall for socializing. Our aim is that our students can use all of these facilities as much as they can. In our school garden there is a playground for children and there is a responsible teacher for kids' security.

And also there are some monitoring teachers in school corridors so that students can feel safe.

Attention, Please!

If you become a member of this family,

- you should be at school before 9.00 which is also the time that lessons begin.
- you shouldn't ruin in and out class activities.
- you should pay attention to cleanliness and order of shared areas.
- you should participate in the flag raising ceremony on Mondays and Fridays respectfully.
- you should be respectful for other school members.
- you should try to be a pacemaker.

Clothes

-We expect from our male students to wear a blue Lacoste t-shirt and dark blue canvas trousers; from our female students to wear a pink Lacoste t-shirt and dark blue canvas trousers.

We believe that if everybody respects these rules, we can live in a more peaceful school environment.

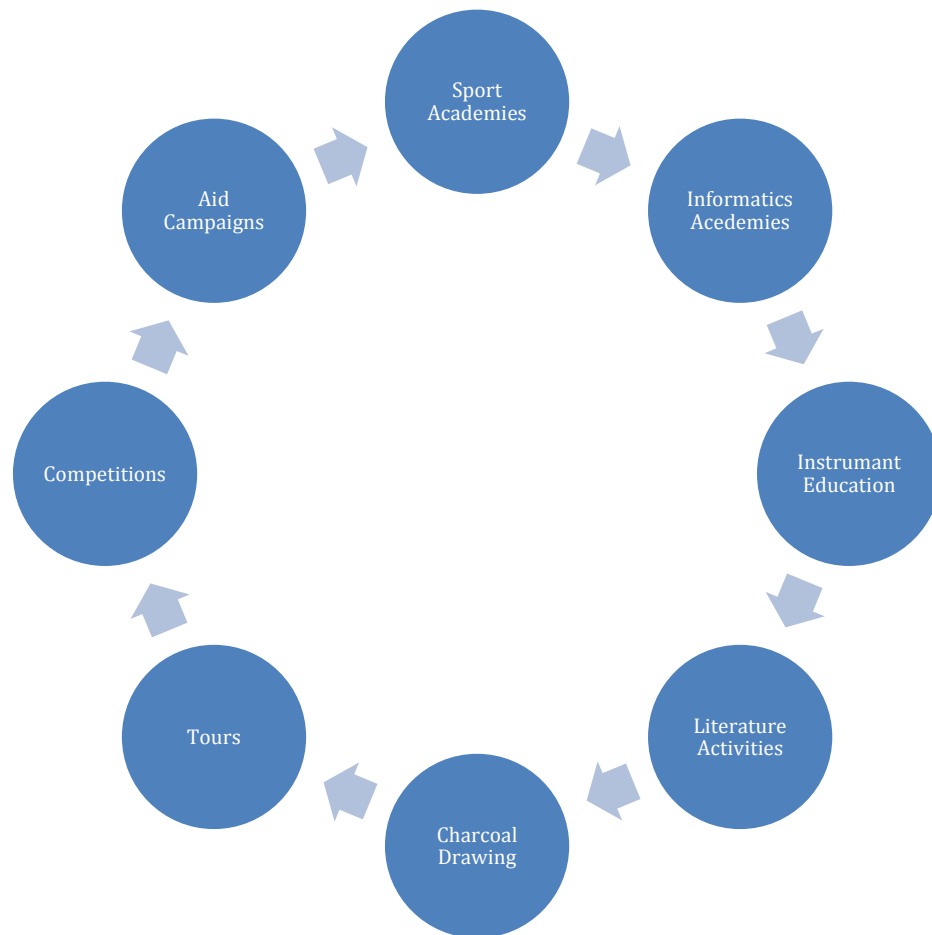
How Can You Benefit From Our Counselling Service?

Counselling service is where you can get help about your personal or academical problems. You can either get an appointment or in some urgent cases can use the service spontaneously. We'll be always happy whenever we help you. Let's have a look at some of our works...

With respect to our individual counselling programs, we support our students' psychological, social, occupational, and academic improvements. Throughout the semester we follow our students' necessities and canalize them in accordance with their necessities. By implementing some inventories according to determined time periods, we would like to use preventative counselling model. Throughout the academic year, we design places where opinions are shared and activities about different topics are organised in accordance with students' necessities.

Classroom guidance teachers support our counselling service too. In the beginning of each semester, we organise some meetings to prepare our counselling plans and in these meetings we try that every classroom guidance can know about the students in this class intimately. By this way they can have a warm relationships with their class. Also, parent support is very important for us. We share as much information as we can with parents, so they can enhance students' improvements. This cooperative support will enhance students' psychological, social, and cognitive developments.

Social Activities



These are our activities, if you want to join one of these you just have to go to your guide teacher Ferhan DiRi and tell her.

School Surroundings

Private Bahçelievler Gokkusagi Elementary School is in the Haznedar-Bahçelievler. There is a park area, a hospital in the vicinity of our school. Besides, There are lots of place for eating and shopping. Our school is close to all transportation vehicles. Beylikdüzü- Söğütlüçeşme is 15 minutes away from the metrobus line and 15 minutes away from the Eminönü-Bağcılar tram line. All blue minibuses passing through İncirli metrobus line reach to our school. Furthermore, our school is 5 minutes away from the bus station. Many buses arrive at the Haznedar bus stop. These buses are:

36CY CEBECİ - YENİBOSNA METRO

92 YENİ MAHALLE METRO / ATEŞTUĞLA - EMİNÖNÜ

97B ÇAVUŞPAŞA - BEYAZIT

97T BASINSİTESİ - TAKSİM

98D YENİ MAHALLE METRO / ATEŞTUĞLA - BAKIRKÖY

98G ESENLER GİYİMKENT / TURGUTREİS - BAKIRKÖY

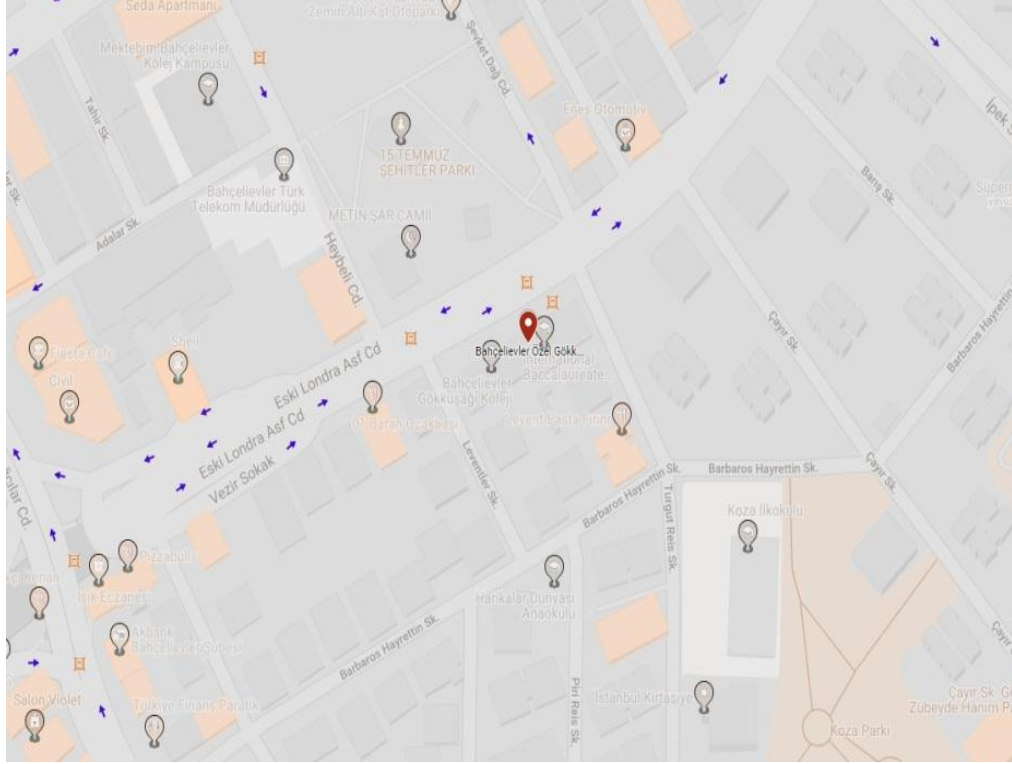
98K YENİ MAHALLE METRO / KİRAZLI - BAKIRKÖY

98Y ESENLER GİYİMKENT / YÜZYIL MAHALLESİ - BAKIRKÖY

If you have any more questions contact us please...

Adres: Haznedar Mahallesi, Eski Londra Asf Cd No:15, 34180

Bahçelievler/İstanbul



Phone:
+90 212 [44 59 00](tel:+90212445900)

**International Student
Guidance Teacher**

Murat KOTAN

Phone:
+905056808058

School Bus Officer:

Selami PAMUKÇU

Phone:
+905322150171